

## PAPER NAME

**FLOWERING AND FRUITING CYCLE OF Cinnamomum sintoc Blume IN LOWLAND FOREST OF CIREMAI MOUNTAIN NATION**

## AUTHOR

**Agus Yadi Ismail**

## WORD COUNT

**3232 Words**

## CHARACTER COUNT

**16924 Characters**

## PAGE COUNT

**6 Pages**

## FILE SIZE

**469.6KB**

## SUBMISSION DATE

**Mar 21, 2023 4:24 PM GMT+7**

## REPORT DATE

**Mar 21, 2023 4:25 PM GMT+7**

● **12% Overall Similarity**

The combined total of all matches, including overlapping sources, for each database.

- 12% Internet database
- 1% Publications database
- Crossref database
- Crossref Posted Content database
- 1% Submitted Works database

● **Excluded from Similarity Report**

- Bibliographic material
- Quoted material
- Cited material
- Small Matches (Less than 8 words)
- Manually excluded sources
- Manually excluded text blocks

## 2 **FLOWERING AND FRUITING CYCLE OF *Cinnamomum sintoc* Blume IN LOWLAND FOREST OF CIREMAI MOUNTAIN NATIONAL PARK, WEST JAVA AND THE IMPLICATION FOR CONSERVATION**

AGUS YADI ISMAIL<sup>1\*</sup>), TOTO SUPARTONO<sup>1)</sup>, AGUNG RIFAI<sup>1)</sup>, EMING SUDIANA<sup>2)</sup> AND ELLY PROKLAMASININGSIH

4 <sup>1</sup> Faculty of Forestry, Kuningan University, Street Tjut Nyak Dhien Cijoho Kuningan, 45513, Indonesia  
<sup>2</sup> Faculty of Biology, General Soedirman University, Purwokerto, 53122, Indonesia

\*Email: [agus.yadi@uniku.ac.id](mailto:agus.yadi@uniku.ac.id)

Accepted October 11, 2021 / Approved August 08, 2022

### ABSTRACT

1 *Cinnamomum sintoc* Blume is an endangered species experiencing an ongoing decline due to overharvesting; in- and ex-situ conservation efforts are urgently needed to ensure its survival. We performed a detailed assessment of the flowering and fruiting phenology of *C. sintoc* in a lowland forest in West Java, Indonesia. We aimed to relate the duration of each phenological phase to environmental factors including elevation, humidity, temperature, and slope, as well as the orientation of the flowers. A total of 30 trees were sampled from three elevation ranges (500–700, 700–900, and 900–1,100 m). We found that *C. sintoc* requires approximately 40 days to complete flowering and an additional 82 days to produce mature fruit. The period from flower initiation to fruit ripening spans 4 months, from late July to early November. Flowers that are east-facing developed mature fruit more rapidly than those facing other directions, and the shortest flowering and fruiting phenological period was observed for east-facing flowers at 700–900 m. These results provide a baseline for studying phenological shifts in *C. sintoc*, and could inform seed harvesting efforts for conservation projects in the study area of Gunung Ciermai National Park.

Key words: Bintangkot, declining population, Endangered species, Lauraceae, phenology

### INTRODUCTION

*Cinnamomum sintoc* is a critically endangered species experiencing ongoing population decline due to overexploitation. The species is sought after and harvested for perceived health benefits (de Kok, 2019). Handayani (2018) reported ongoing population declines in several conservation areas, as well as an imbalanced population structure; seedlings were scarce relative to later growth stages, suggesting poor recruitment. Similar findings were reported from Bromo Tengger Semeru (Hidayat and Risna, 2007) and Ciremia Mountain National Parks (Ismail et al., 2019), located in East and West Java, Indonesia, respectively. The total population of *C. sintoc* is currently less than 50 individuals. Given the ongoing decline, in- and ex-situ conservation efforts are urgently needed, many of which rely on successful seed harvesting and propagation.

Obtaining high-quality seeds requires an understanding of plant phenology, including seasonal phenomena such as flowering, fruiting, and leaf drop (Yulistyarini 2020). Aside from factors related to internal biological processes, plant phenology is strongly influenced by the environment, especially air temperature and humidity, as well as the timing and length of rainy and dry seasons. These factors influence phenological timing because they are directly related to soil moisture and thus water stress (Moore & Laurenroth, 2017, Krishnan et al., 2020). The

flowering process includes several phases that are influenced by different intrinsic and extrinsic factors. Although each flower produced by a plant has the potential to produce a seed, production rates can be extremely low, such that few seeds are available for harvesting or propagation. Thus, understanding flowering phenology is pivotal to plant conservation (Jamsari et al., 2007)

In a study of the flowering and fruiting times of four *Cinnamomum* species in Puwodadi Botanical Garden, East Java, Yulistyarini (2020) showed that *C. sintoc* typically flowers once per year, during the dry season in June and July, with peak flowering occurring in July. In a phenological assessment of the related *C. cullilawan* in Papua New Guinea, Herlina et al. (2022) found that flowering phenology was strongly influenced by air temperature and humidity, rainfall, light intensity, and wind direction. The flowering cycles of *Cinnamomum* in Sri Lanka are strongly affected by environmental factors, but the effects thereof can differ among species (Razad et al., 2018, Kubov et al., 2022).

We aimed to comprehensively assess the flowering and fruiting cycles of *C. sintoc*, to assist with conservation efforts. These data are critical for determining the optimal timing of seed collection for in- and ex-situ projects. Collectively, studies of *Cinnamomum* indicate that fruiting and flowering phases are influenced by local environmental factors. We aimed to assess each phase within the phenological

cycle across an elevation gradient in Gunung Cerman National Park, West Java.

**RESEARCH METHOD**

We performed sampling in the Bintangot Block of Gunung Ciremai Mountain National Park, with sampling locations spanning an elevation range of 500–1,100 m above sea level (Figure 1). Sampling occurred from January to December of 2020.

We sampled 30 *C. sintoc* trees; 10 trees were selected within each of three elevation ranges (500–700, 700–900, and 900–1,100 m). We assessed the duration of five flowering and fruiting phases for each sample tree: flower initiation (F<sub>0</sub>), small bud (F<sub>1</sub>), big bud (F<sub>2</sub>), flower opening (F<sub>3</sub>), and fruit development (F<sub>4</sub>). These categories were based on those described

by Dafni (1992) (Table 1). In addition, we assessed the orientation (relative to cardinal directions) of the flowers. Some fruit and flower observations were made using binoculars, and photographs were taken of sample trees. Trees were marked using tree paint and/or tags. At the time of flower and fruit observations, we measured temperature (°C) and humidity using a thermometer and hygrometer, respectively. Slope was assessed for each sample tree using a clinometer. We assessed the relationships among the duration of each phase, flower orientation, and environmental factors (temperature, humidity, and slope) using ANOVA and the Kruskal-Wallis and Mann-Whitney U tests. Analyses were performed using SPSS software (version 32.0; IBM Corp., Armonk, NY, USA).

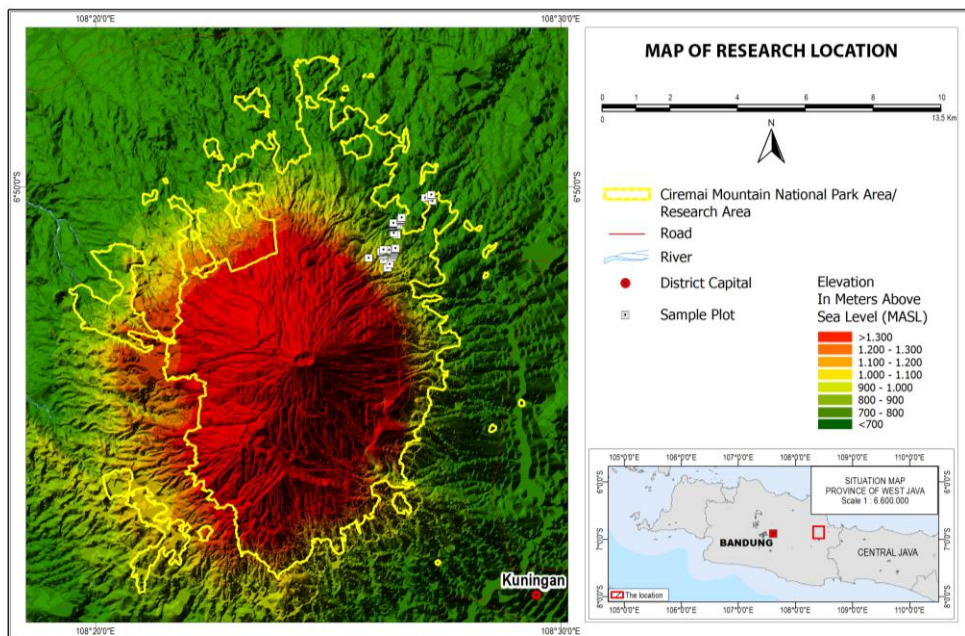


Figure 1. Research location at Bintangot Block, Gunung Cerman National Park, West Java

Table 1. Description of *C. sintoc* flower and fruit development phases (Dafni, 1983).

Phase	Symbol	Description
Flower initiation	F <sub>0</sub>	Floral initiation begins when the bud emerges from the flower primordium until the beginning of the small bud phase characterized by the presence of clusters of composite flowers
The small bud	F <sub>1</sub>	The small bud phase refers to the development phase occurring from the end of floral initiation until the flower crown emerges from the fruit primordium.
The big bud	F <sub>2</sub>	The big bud phase begins when the crown emerges from the fruit primordium until the crown is open.
Flower opening	F <sub>3</sub>	This phase occurs since the flower crown is open until the initial stage of fruit formation, indicated by the fall of the flower crown indicating the fertilization and the beginning of the fruit development phase.
Fruit development	F <sub>4</sub>	The fruit development phase occurs from the end of the flower opening phase until the fruit is physiologically ripened.

## RESULT AND DISCUSSION

In total, 120 flowers were observed across the 30 sample trees. On average, the  $F_0$  stage lasted for 14 days (range: 12–15),  $F_1$  for 12 days (7–15),  $F_2$  for 7 days (5–9),  $F_3$  for 7 days (6–11), and  $F_4$  for 82 days (77–90) (Table 2). On average, the entire flowering and fruiting cycle was completed in 121 days (112–132), i.e., approximately 4 months (Figure 2).

Light is one of the most important environmental cues for plants, influencing almost every life stage (Singh et al., 2014). Light acts as a sophisticated input signal influencing physiology and growth, as well as serving as the source of energy for  $\text{CO}_2$  fixation during photosynthesis. We assessed floral orientation because flower development is strongly influenced by light intensity (Watanabe et al., 2015) and there is some evidence that temperature and photoperiod may work in tandem to affect flower opening (Razad et al., 2018). In our study, flower orientation did not significantly explain variation in the duration of the  $F_0$ – $F_2$  phases. However, there were significant differences among orientations in the  $F_3$  and  $F_4$  phases, with east-facing flowers having the shortest overall cycle and individual phase lengths. This is likely due to light intensity and duration, given that flowers that face east receive more intense light and have longer photoperiods.

There were significant differences in the duration of all five phenological phases, and total cycle length, among the three elevation ranges assessed in this study. The shortest-duration  $F_0$  ( $12.7 \pm 0.948$  days),  $F_1$  ( $9.4 \pm 3.800$ ), and  $F_2$  ( $6.8 \pm 1.0327$ ) phases were seen at the lowest elevation range (500–700 m). The shortest  $F_3$  and  $F_4$  phases were observed in the mid-elevation range (700–900 m), as were the shortest total cycle lengths ( $119.8 \pm 5.788$ ) (Table 2). These differences are presumably related to variation in temperature and humidity across the elevation range. Differences in elevation relate to differences in plant flowering times (Widhiono et al., 2017). As elevation increases,

temperature decreases and light intensity and ultraviolet radiation increase, which shortens the period available for plant growth (Kieltyk, 2021). Wind speed and evaporation also tend to increase with elevation. These factors are often associated with morphological changes, where plants growing at higher elevations tend to have smaller leaves and flowers relative to those at lower elevations. These changes tend to be more pronounced in large than small species. These factors all combine to create clear differences in plant phenology between high and low elevation areas (Maad et al., 2013). In general, plant reproductive physiology tends to be driven by temperature and humidity, which affect flowering time, pollen maturation and germination in vitro, as well as fruit formation (Singh et al., 2014). Bucher and Römermann (2020) noted that phenological patterns, including first and last flowering days and flower duration, are strongly influenced by daily air temperature and humidity, which are in turn related to elevation (Gordo & Sanz, 2010).

We found that the period from flower initiation has an average length of 40 days, with an additional 82 days required for fruit maturation, in *C. sintoc*. We also found that the earliest mature fruit developed within approximately 116 days at an elevation of 700–900 m, and were from east-facing flowers. Understanding phenological cycles is critical for determining appropriate conservation strategies for endangered species (Rosemartin et al., 2014, Numata et al., 2022). Conservation area managers should understand factors that stimulate, regulate, and drive phenological cycles, and how these factors may change within or between plant populations and communities targeted for conservation (Polgar and Primack, 2011, Wolf et al., 2017). Understanding how these factors vary across time and geographic scale is also critical for managing conservation areas (Richardson et al., 2013)

**Table 2.** Duration of flowering and fruiting phase across three elevation ranges and four floral orientations relative to the cardinal directions (n=120).

Phase	Number of samples (n)	Average (day)	Min (day)	Max (day)
Flower initiation ( $F_0$ )	120	14	12	15
Small buds ( $F_1$ )	120	12	7	15
Big buds ( $F_2$ )	120	7	5	9
Flower opening ( $F_3$ )	120	7	6	11
Fruit development ( $F_4$ )	120	82	77	90
Flowering and fruiting phase	120	121	112	132

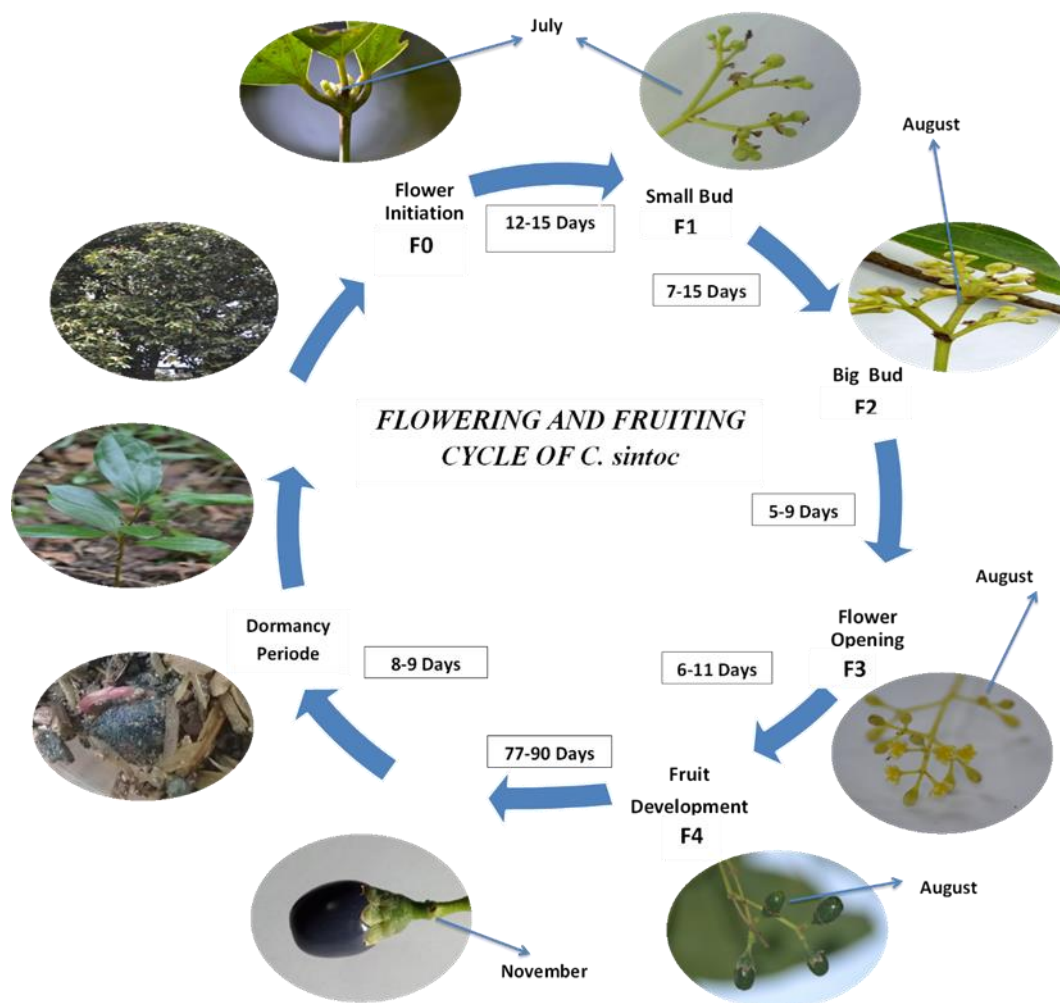


Figure 2. The flowering-fruitleting cycle of *C. sintoc*

Table 3. Duration of flowering and fruiting phase between elevation and direction (means±stdev) (n=120)

Elevation	Parameters	North	South	East	West
500-700	Flower initiation (F <sub>0</sub> )	14,2±0,421	14,2±0,421	14,2±0,421	14,2±0,421
700-900	Flower initiation (F <sub>0</sub> )	12,7±0,948	12,7±0,948	12,7±0,948	<b>12,7±0,948**</b>
900-1100	Flower initiation (F <sub>0</sub> )	14,0±0,000	14,0±0,000	14,0±0,000	14,0±0,000
500-700	Small bud (F <sub>1</sub> )	12±3,464	12±3,464	9,4±3,864	9,4±3,800
700-900	Small bud (F <sub>1</sub> )	9,4±3,864	9,4±3,864	<b>9,3 ±3,713*</b>	9,4±3,800
900-1100	Small bud (F <sub>1</sub> )	13,3±2,213	13,3±2,213	9,4±3,864	9,4±3,800
500-700	Big bud (F <sub>2</sub> )	6,8±1,0327	6,8±1,0327	6,8±1,0327	<b>6,8±1,0327**</b>
700-900	Big bud (F <sub>2</sub> )	7,2±0,632	7,2±0,632	7,2±0,632	7,2±0,632
900-1100	Big bud (F <sub>2</sub> )	7,2±0,6324	7,2±0,6324	7,2±0,6324	7,2±0,6324
500-700	Flower Opening (F <sub>3</sub> )	7,4±2,065	7,5±2,127	7,4± 2,065	7,4± 2,065
700-900	Flower Opening (F <sub>3</sub> )	7,9±1,449	7,7±1,481	7,9± 1,449	7,9± 1,449
900-1100	Flower Opening (F <sub>3</sub> )	6,1±0,316	6,1± 0,316	<b>6,0±0,00*</b>	<b>6,2± 0,632**</b>
500-700	Fruit development (F <sub>4</sub> )	82,1±4,148	82±3,887	81,4±3,921	82,8±3,614
700-900	Fruit development (F <sub>4</sub> )	82,7±2,945	82,7±3,128	79.3±3,335	82,6±3,0623

Elevation	Parameters	North	South	East	West
900-1100	Fruit development (F <sub>4</sub> )	82,5±2,549	82,5±2,415	<b>81,2±3,190*</b>	82,3±2,496
500-700	Flowering and Fruiting phase	122,5±5,542	122,4±4,971	121±5,308	132,2±4,871
700-900	Flowering and Fruiting phase	119,9±0,519	119,9±4,771	<b>116,3±6,056*</b>	<b>119,8±5,788**</b>
900-1100	Flowering and Fruiting phase	123,1±4,773	123,1±2,643	121,8±3,326	123±2,309
500-700	Total cycle	122,5±5,542	122,4±4,971	121,8±5,308	123.2±4,871
700-900	Total cycle	119,9±5,820	119,9±4,771	<b>116,3±6,056*</b>	<b>119,8±5,788**</b>
900-1100	Total cycle	123,1±2,923	123,1±2,643	121,8±3,326	123±2,309

Legend : \* shortest time between direction, \*\* shortest time between elevation

## CONCLUSION

The average time from flower initiation to flowering in *C. sintoc* is 40 days, with an additional 82 days required for the production of fully mature fruit. The total flowering and fruiting cycle, from initiation to the production of ripe fruit, begins in late July and ends in early November. East-facing flowers reach maturity faster than those facing other directions, with the shortest total floral cycles for east-facing flowers seen at an elevation of 700–900 m. These results could inform conservation and seed collection efforts for *C. sintoc* in Gunung Cerman National Park area.

## ACKNOWLEDGMENTS

We would like to thank any party who help this research and Universitas Kuningan for supporting this research. Any feedback for this paper would be highly appreciated.

## REFERENCES

- Azad, R.K.L., Kumara, W., Gamini, S., Ranawaka, R.A.A.K., Pushpakumara, D.N.K.G., Sudarshane, Geekiyanage S. 2018. Flower morphological diversity of cinnamon (*Cinnamomum verum* Presl) in Matara District, Sri Lanka. *Open Agriculture* 3: 236–244
- Bucher, S.F., Christine, R. 2020. Flowering patterns change along elevational gradients and relate to life-history strategies in 29 herbaceous species. *Alpine Botany*. <https://doi.org/10.1007/s00035-020-00231-w>
- Dafni A. (1992): Pollination ecology: a practical approach. – Oxford University Press, New York.
- de Kok RPJ. 2019. A revision of *Cinnamomum Schaeff.* (Lauraceae) for Peninsular Malaysia and Singapore Gardens' Bulletin Singapore 71 (1): 89–139.
- Gordo, O., Sanz, J.J. 2010. Impact of climate change on plant phenology in Mediterranean ecosystems. *Global Change Biology*. 16 : 1082–1106,
- Handayani A. 2018. Konservasi Ex-situ *Cinnamomum sintoc* di Kebun Raya Cibodas Jawa Barat. *Biodiversitas*. 4(2): 111-114.
- Herlina, R., Siburian, S., Maboro, B. 2022. Phenology of *Cinnamomum cullilawan*. *Median*. Volume 14(1)
- Hidayat, S., Risna, R.A. 2007. Kajian Ekologi Tumbuhan obat langka di Taman Nasional Bromo Tengger Semeru. *Biodiversitas*. 8 (3): 169-173
- Ismail, A.Y., Cecep, K., Eming, S., Pudji, W. 2019. Short Communication: Population and stand structure of *Cinnamomum sintoc* in the Low Land Forest of Mount Ciremai National Park, West Java, Indonesia. *Biodiversitas*. 20 (4): 1042-1047
- Jamsari, Yaswendri, Musliar Kasim. 2007. Fenologi Perkembangan bunga dan buah species *Uncaria gambir*. *Biodiversitas* Vol. 8. No.2 hal 141-148. ISSN: 1412-033X.
- Kieltyk, P. 2021. Patterns of foral allocation along an elevation gradient: variation in *Senecio subalpinus* growing in the Tatra Mountains . *Alpine Botany* 131:117–124 <https://doi.org/10.1007/s00035-021-00247-w>
- Krishnan, R.V.R., Santhoshkumar, E.S., Radhamany, P.M., Valsaladevi, G. 2020. Taxonomic Significance of Floral Morphology in *Cinnamomum Schaeffer* (Lauraceae) From South India. *Journal of Scientific Research*. 64(1)
- Kubov, M., Schieber, B., Janík, R. 2022. Effect of Selected Meteorological Variables on Full Flowering of Some Forest Herbs in the Western Carpathians. *Atmosphere* 13, 195.
- Maad, J., Armbruster, W.S., Fenster, C.B. 2013. Floral size variation in *Campanula rotundifolia* (Campanulaceae) along altitudinal gradients: patterns and possible selective mechanisms. *Nor J Bot*. 31:361–371.
- Moore, L.M., Lauenroth, W.K. 2017. Differential effects of temperature and precipitation on early- vs. late-flowering species. *Ecosphere*. 8(5):
- Numata, S., Yamaguchi, K., Shimizu, K., Sakurai, G., Morimoto, A., Alias, N., Azman, N.Z.N., Tetsuro, H., Akiko, S.A. 2022. Impacts of climate change on reproductive phenology in tropical rainforests of

- Southeast Asia . Communications Biology. <https://doi.org/10.1038/s42003-022-03245-8>
- Owen, Smith, N., Ogutu, J.O. 2013. Controls over reproductive phenology among ungulates: allometry and tropical-temperate contrast. *33* (3), 256 – 263.
- Polgar, C.A., Primack, R.B., 2011. Leaf-out phenology of temperate woody plants: from trees to ecosystems. *New Phytol.* 191, 926–941.
- Richardson, A.D., Keenan, T.F., Migliavacca, M., Ryu, Y., Sonnentag, O., Toomey, M., 2013. Climate change, phenology, and phenological control of vegetation feedbacks to the climate system. *Agric. For. Meteorol.* 169, 156–173
- Rosemartin, A.H., Crimmins, T.M., Enquist, C.A.F., Gerst, K.L., Kellermann, J.L., Posthumus, E.E., Denny, E.G., Guertin, P., Marsh, L., Weltzin, J.F., 2014. Organizing phenological data resources to inform natural resource conservation. *Biol. Conserv.* 173, 90–97.
- Singh, D.K., Agnihotri, R.K., Chauhan, S., Ganie, S.A., Singh, G., Sharma, R. 2014. Effect of Environmental Changes on Phenology and Reproductive Biology of *Sida cordifolia* with Special Reference to the Temperature and Relative Humidity. *International Journal of Plant & Soil Science* 3(4): 372-379,
- Syamsuwida, D., Aminah, A., Nurochman, N., Sumarni, E.B., Ginting, J. 2014. Siklus perkembangan pembungaan dan pembuahan serta pembentukan buah kemenyan (*Styrax benzoin*) di AEK NAULI. *Jurnal Penelitian Hutan Tanaman.* 11(2) : 89-98.
- Tenorio, G.C., Manriquez, G.I. 2007. Plant reproductive phenology in a temperate forest of the Monarch Butterfly Biosphere Reserve, Mexico. *Interciencia* 32(7): 445-452.
- Yulistyarini. 2020. Reproductive activity patterns of four species of Cinnamomum in Purwodadi Botanic Garden T. IOP Conf. Series: Earth and Environmental Science 456. <http://doi.org/10.1088/1755-1315/456/1/012055>
- Watanabe, S., Noma, N., Nishida, T. 2015. Flowering phenology and mating success of the heterodichogamous tree *Machilus thunbergii* Sieb. et Zucc (Lauraceae). *Plant Species Biology.* <https://doi.org/10.1111/1442-1984.12078>
- Widhiono, I, Sudiana E, and Darsono D . 2017. Diversity of Wild Bees along Elevational Gradient in an Agricultural Area in Central Java, Indonesia. *Psyche* Volume 2017, Article ID 2968414, 5 pages <https://doi.org/10.1155/2017/2968414>.
- Wolf A, A, Zavaletad E S, Selmants PC.2107. Flowering phenology shifts in response to biodiversity loss. *PNAS.* vol 114(13): 3463–3468.

● **12% Overall Similarity**

Top sources found in the following databases:

- 12% Internet database
- Crossref database
- 1% Submitted Works database
- 1% Publications database
- Crossref Posted Content database

TOP SOURCES

The sources with the highest number of matches within the submission. Overlapping sources will not be displayed.

<b>1</b>	<b>researchgate.net</b> Internet	<b>10%</b>
<b>2</b>	<b>semanticscholar.org</b> Internet	<b>1%</b>
<b>3</b>	<b>docksci.com</b> Internet	<b>&lt;1%</b>
<b>4</b>	<b>smujo.id</b> Internet	<b>&lt;1%</b>
<b>5</b>	<b>Yijian Rao, Christine Rückert, Wolfram Saenger, Volker Haucke. "The e...</b> Crossref	<b>&lt;1%</b>



## ● Excluded from Similarity Report

- Bibliographic material
- Cited material
- Manually excluded sources
- Quoted material
- Small Matches (Less than 8 words)
- Manually excluded text blocks

---

### EXCLUDED SOURCES

**journal.ipb.ac.id**

Internet

**72%**

---

**garuda.kemdikbud.go.id**

Internet

**11%**

### EXCLUDED TEXT BLOCKS

**Media Konservasi Vol.27 No.2 Agustus 2022**

journal.ipb.ac.id

---

**Media Konservasi Vol.27 No.2 Agustus 2022**

journal.ipb.ac.id

---

**Flowering And Fruiting Cycle Of Cinnamomum sintoc Blume**

www.researchgate.net

---

**Flowering And Fruiting Cycle Of Cinnamomum sintoc Blume**

www.researchgate.net

---

**ISSN: 0215-1677DOI: 10.29244/medkon.27.2**

Institut Pertanian Bogor on 2022-08-18